

# PLASTIC PROCESSING

## INJECTION MOULDING (Vertical/Horizontal)

- 81 Machines: From 60 Tons to 1000 Tons from Toshiba and Toyo.

## BLOW MOULDING

- For any size up-to 120 Ltr. (V) and 8kg (Wt)
- Mould up-to 1800mm x 830mm x 890mm

(All Moulding Machines Fully PLC controlled with Servo motor, Robotic interface and QMC.) interface

## EXTRUSION MOULDING

## RESIN POURING MULTICOLOUR GRAVITY MOULDING

- Automatic Production Line.



## INJECTION MOULDING

- Fully automatic Centralised Material Conveying System from Toshiba and Wittman.
- Quick Mould Change, Magnetic Platens System.
- Sequence Gate Control System for Multiple Gate Type Mould (Synventive).
- Gas Assist Injection Moulding Process for thin wall components.
- Production Control System (M-Dart). Provides real-time live data on shop floor like OEE, Plan/Actual, Machine Running Status, Quality Rating, Breakdowns and more.

## BLOW MOULDING

- ABS Material Blow Moulding.
- 10 kg Accumulator Capacity for uniform flow.
- Robotic Arm for handling big size items.
- 100 Point Parsion Control System from MOOG.
- Top and bottom Parsion Sealing System.
- Material Preheating by dehumidifier.
- Hydraulic Core and Pneumatic Core Control system for Side Core type of mould.
- Mould up-to 1800mm x 830mm x 890mm, can be installed.

## CHROME SHEET EXTRUSION MOULDING

- Automatic Loading System.
- Automatic Thickness Control.
- Automatic Length Cutting.
- Film Lamination System.

## RESIN POURING MULTICOLOUR GRAVITY MOULDING

- Automatic Colour Feeding System.
- Capable of producing items that require up-to 4 Colours at the same time.



# INJECTION MOLDING

# PLASTIC PROCESSING

## VACCUUM FORMING

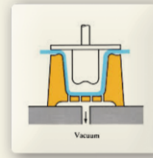
- 9 Machines

## SHEET EXTRUSION

- HDPE, TPE, TPO, TPV, ABS.

## COMPOUNDING

- Twin screw extrusion two stage machine.
- TPE (SEBS & SBS Based), TPO, TPV, Flexible PVC/PP.



## VACUUM FORMING

- Size: Maximum up-to 1700(W) x 2000 (L) x 500 (H)
- PLC Controlled Roll to Roll High Speed Automatic Feeding:
- 6 axis Robot for precise and fast plastic parts cutting.
- 5 axis double head CNC Router.

Lorem Ipsum



## SHEET EXTRUSION

- Size up-to 2000mm finished width for ABS, TPO, TPV, TPE, HIPS.
- Sheet thickness range of 0.5mm to 5mm within tolerance range of +/- 3%.
- Size up-to 1850mm finished width for PVC Sheeting up to 10mm thickness.
- Co-Extrusion by Dual-Extruder of ABA/AB type two layer sheet.
- Film Lamination System along with Calendaring Unit.
- Fully Automatic PLC Control System by Mitsubishi.

Lorem Ipsum



## COMPOUNDING

- Fully Automatic PLC Control System from Siemens for PVC, TPV, TPE, PP.
- Automatic material loading system.
- High speed Mixture Heating and Cooling.
- Air cooled die face palletizing system for uniform pallet size.



## VACUUM FORMING

# PLASTIC PROCESSING

## VACCUUM FORMING

- 9 Machines

## SHEET EXTRUSION

- HDPE, TPE, TPO, TPV, ABS.

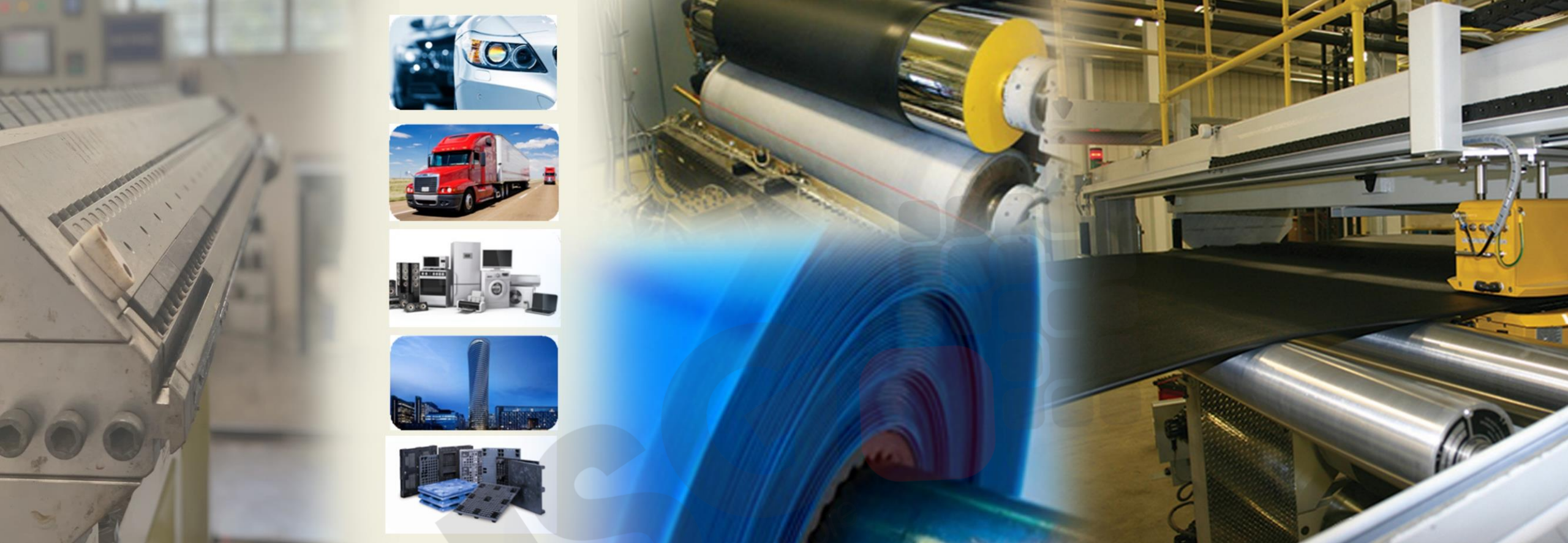
## COMPOUNDING

- Twin screw extrusion two stage machine.
- TPE (SEBS & SBS Based, TPO, TPV, Flexible PVC/PP.

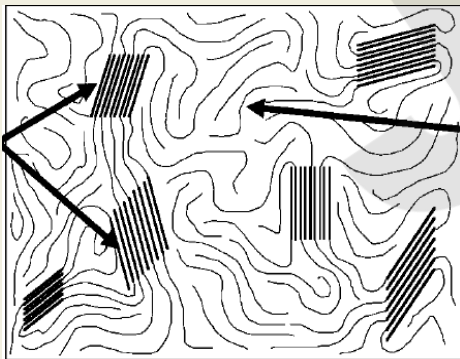


## SHEET EXTRUSION

- Size up-to 2000mm finished width for ABS, TPO, TPV, TPE, HIPS.
- Sheet thickness range of 0.5mm to 5mm within tolerance range of +/- 3%.
- Size up-to 1850mm finished width for PVC Sheeting up to 10mm thickness.
- Co-Extrusion by Dual-Extruder of ABA/AB type two layer sheet.
- Film Lamination System along with Calendering Unit.
- Fully Automatic PLC Control System by Mitsubishi.



CRYSTALLINE  
STRUCTURE POLYMER  
PHASE



AMORPHOUS STRUCTURE  
ELASTOMER PHASE

- **Specialty TPO Sheets (Rigid & Flexible), ABS , HIPS, LDPE, PP, TPV, TPO, TPE for thermoforming application**
  - Single Ply, Multi-ply Composite Sheets, Glass Reinforced Sheets
- **Thermoformed Products**
  - Automotive Interior, Exterior & Under the Hood Components
- **Building Construction**
  - TPO Membranes; TPE Expansion Joint Profile
  - End Use Markets
  - Automotive > 60%; Transportation (Railways); Medical & Healthcare;

# SHEET EXTRUSION

# PLASTIC PROCESSING

## VACCUUM FORMING

- 9 Machines

## SHEET EXTRUSION

- HDPE, TPE, TPO, TPV, ABS.

## COMPOUNDING

- Twin screw extrusion two stage machine.
- TPE (SEBS & SBS Based), TPO, TPV, Flexible PVC/PP.



## COMPOUNDING

- Fully Automatic PLC Control System from Siemens for PVC, TPV, TPE, PP.
- Automatic material loading system.
- High speed Mixture Heating and Cooling.
- Air cooled die face palletizing system for uniform pallet size.



## PVC COMPOUNDING





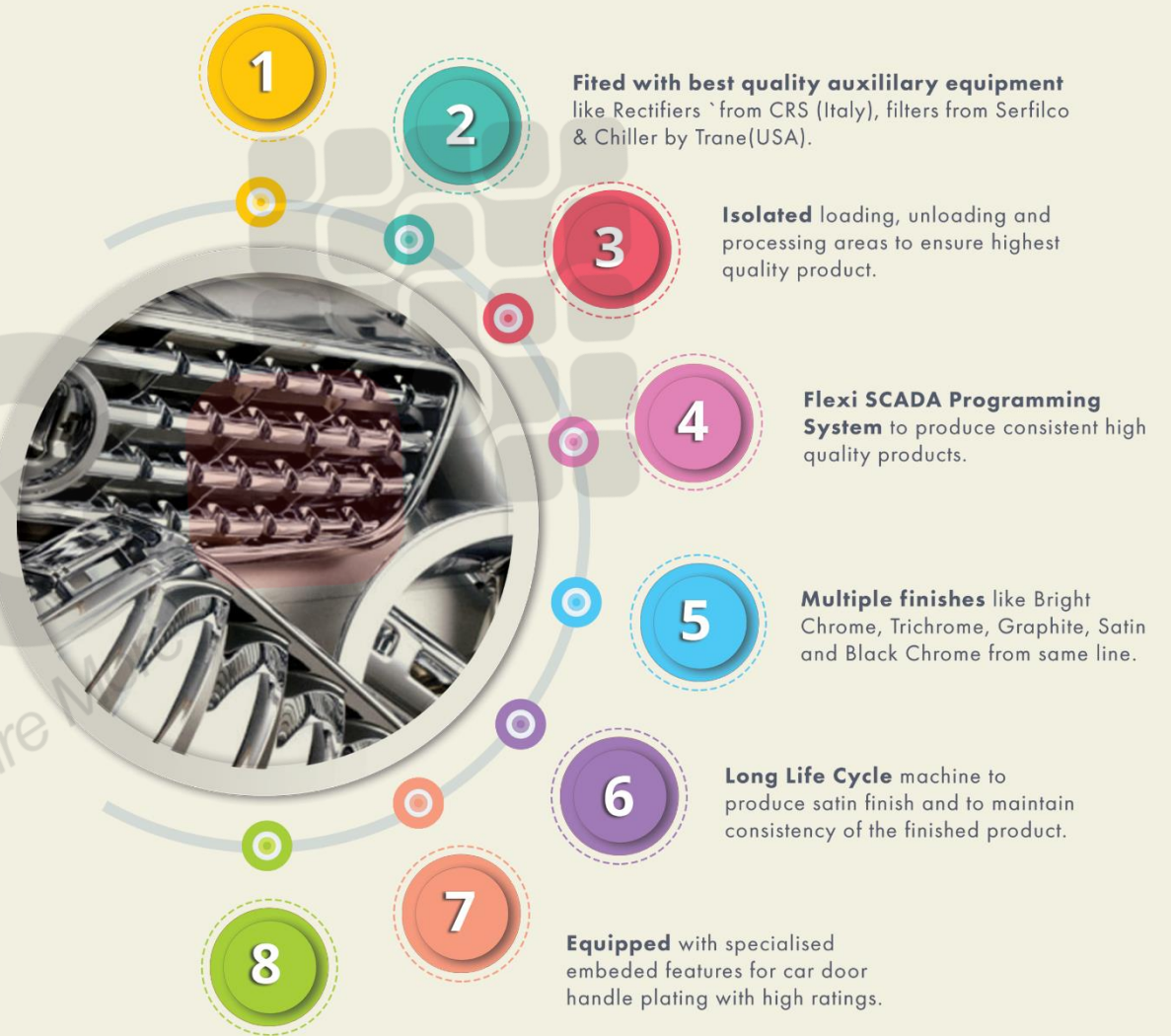
## TPE, TPV & TPO COMPOUNDING

# SURFACE FINISHING

## AUTOMATED PLATING ON PLASTICS

- 2 Fully Automated Lines.
- Proven expertise.
- Credible Track Record.

**Fully Automated Production Systems** using cutting edge Technology from Aucos, GmbH.

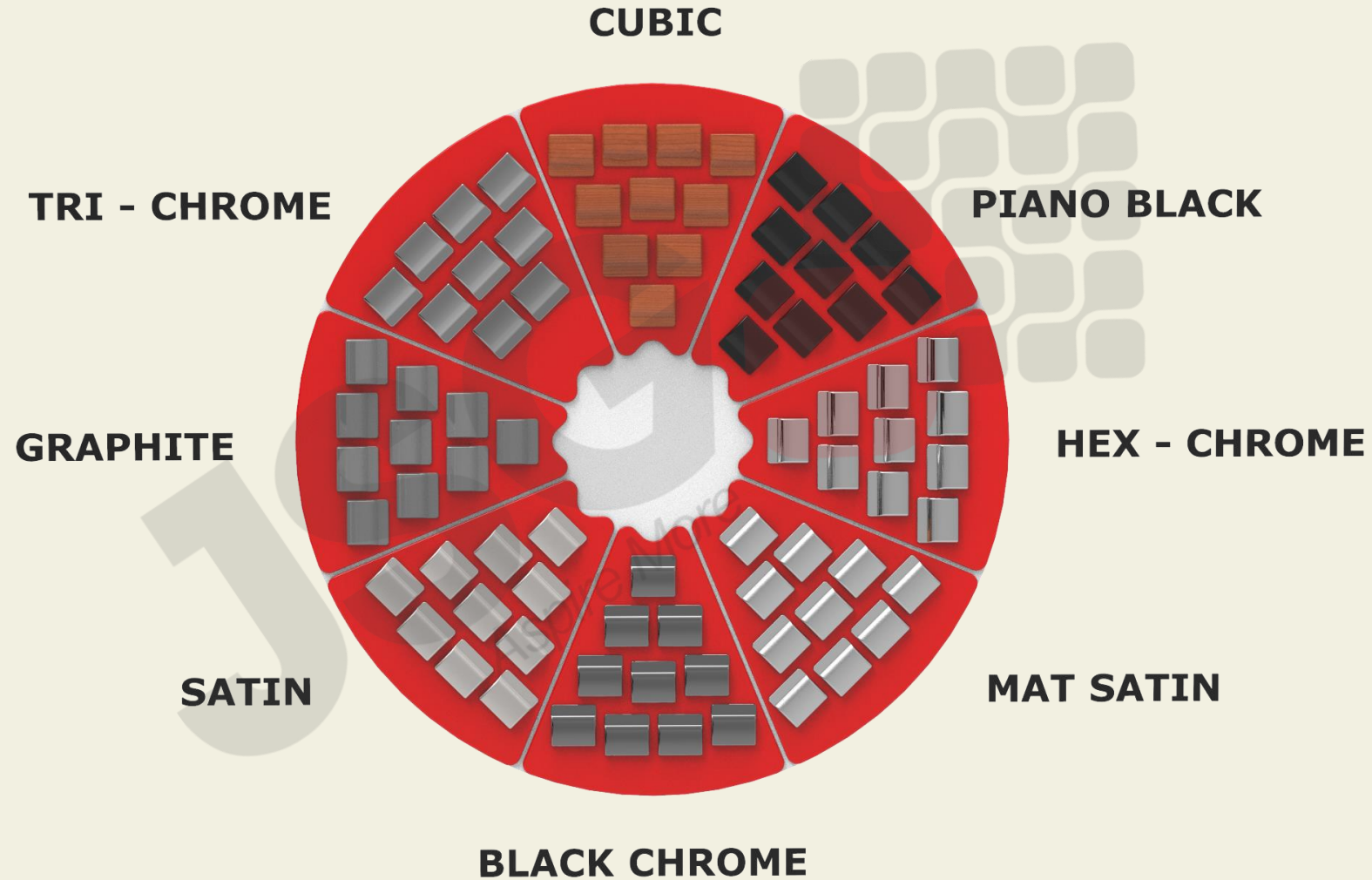


**Wide plating windows:**  
2300(L) x400(W) x 1700(H)



# PLATING PLANT

# ONE STOP SURFACE FINISHING SOLUTION



# SURFACE FINISHING

## **PAINTING ON PLASTICS**

- With Envelope and Bag, 1600mm.

## **ANODIZING**

- Fully Automatic Line.

## **CUBIC PRINTING**

- A revolutionary, unique technology.

## **IN-MOULD DECORATIONS**

- For high precision plastic items requiring exceptional colour and appearance.

## **POWDER COATING**

- For Metals and Alloys.

## **PAINTING ON PLASTICS**

- High Gloss & Body Colour.
- 3C & 1B System (Coating & Baking).

1

2

## **ANODIZING**

- Automatic Process Control by SCADA.
- Vision Camera for Quality Checks.
- Electro-colouring: Black and Grey.
- Zero Defect levels - last one year.

3

## **CUBIC PRINTING**

- Meant for complex shapes, compound curved surfaces and rough surfaces.
- Can be applied to wide variety of shapes.
- Can be applied to almost any material.

4

## **IN-MOULD DECORATION**

- Moulded into the product by placing a pre-printed decoration in-mould prior to moulding.
- Results are long lasting and high quality.

5

## **POWDER COATING**

- Applied on Metal and alloys.
- Applied for improved surface resistance from corrosion.

## SHEET STAMPING & CUTTING

### SHEET STAMPING

- Power Press from 10 Tons to 350 Tons.
- MAX Size up to 2100 x 900

### FIBER LASER CUTTING

- 1 KW Fiber Laser Cutting.

### PLAZMA CUTTING

### SHEET STAMPING

- For Stainless Steel and Mild Steel component.
- Bending through die for large quantities.

01

### FIBER LASER CUTTING

- For SS Sheet Cutting without Die.
- Suitable for Processing High Marking Depth, Smoothness & Accuracy.
- Can cut upto 4 MM in thickness.
- For short volumes and large variety in large profile parts where tooling is not feasible.

02

### PLAZMA CUTTING

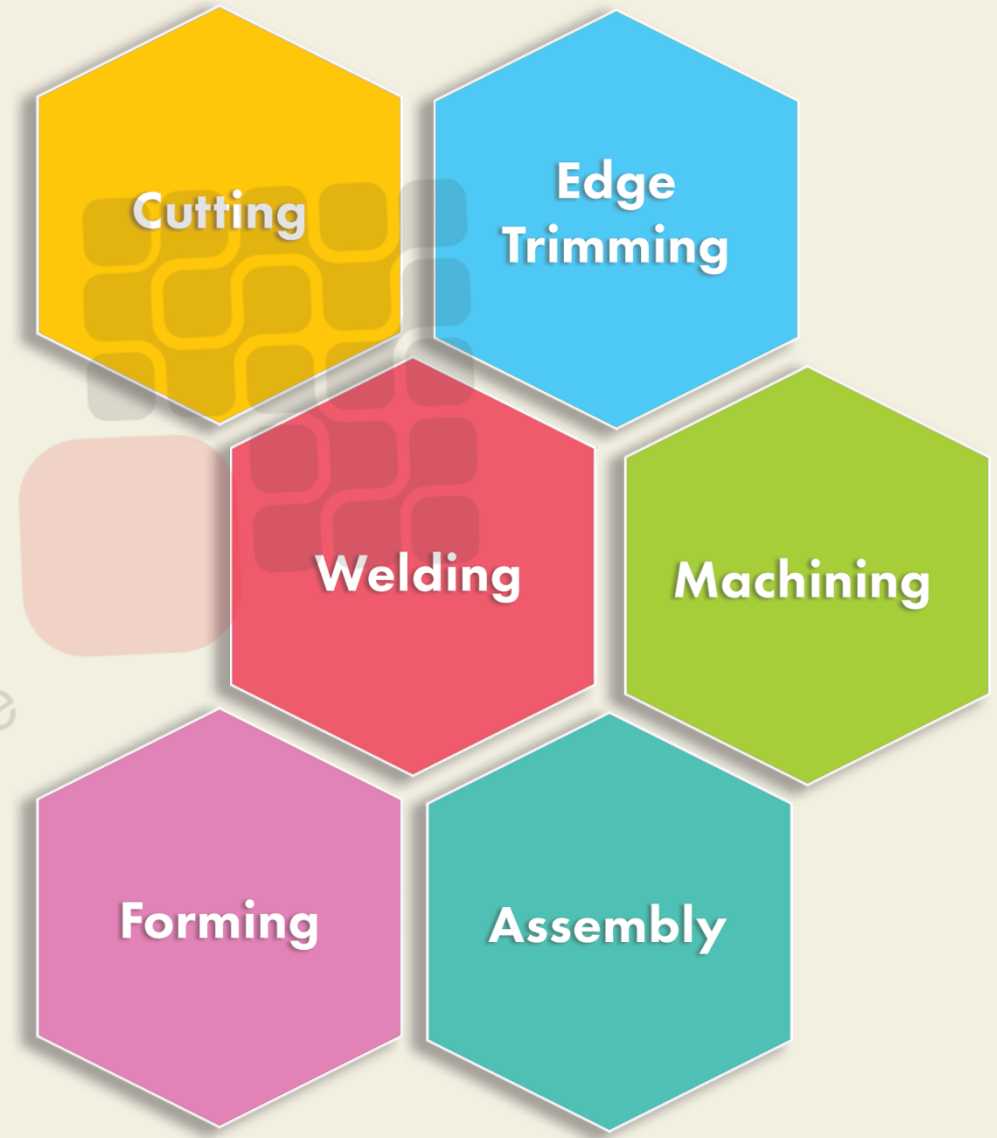
- For Mild Steel Sheet Cutting without Die.
- Suitable For Processing High Marking Depth, Smoothness & Accuracy..
- Can cut upto 12 MM for large variety & small volume.

03

## METAL FABRICATION & ASSEMBLY

### PIPE BENDING AND ASSEMBLY UP-TO 75mm.

- Front & Rear Bull Gaurd
- Coat Hanger
- Side Foot Step



# PRINTING

## SILK SCREEN PRINTING

- Latest, state of the art equipment.
- Dust free environment.

## 3D BADGES - KROMEX

- A Technology that produces Flexible Badges and labels with Geometrical Shapes and Sharp Angles.

## PU DOME LABELS

- Poly Urethane Resin coated dome labels. Used in a wide range of home appliances, Automobile industry and electronic industry.
- Adding Glitter and Perfume available.

## PAD PRINTING

- Allows transfer of a 2-Dimensional image on-to a 3-Dimensional object.

## HOT STAMPING

1

## SILK SCREEN PRINTING

- Highest quality raw materials; Silicon free and ROHS approved special adhesives and printing inks to produce decals.
- Guaranteed Life Span of at least 2-5 years for Light Fastness and Adhesion Strength.
- Non-Lacquered Decals: Printed on Automotive grade vinyls with excellent gloss and Long Outdoor life.
- Lacquered Decals: Printed on Automotive grade vinyls with special coating to accept PU or TSA Lacquer Coat.

2

## 3D BADGES - KROMEX

- Also known as Chromex. This is a Rapid Engineering process.
- The product is Flexible and easily applied both on Flat and Curved surfaces.
- Colors and Special Effects make these Labels and Badges much more attractive.
- BIG Advantage: The entire process is Environment Friendly.

3

## PU DOME LABELS

- Produced using state-of-the-art 3 Dimensional Axis machine to handle micro doming, thin doming and script lettering.
- Striking looks
- Smooth finish
- Light fast
- Non-scratch and abrasion resistant
- Solvent repelling
- Glitter and Fragrance in Dome Decals.
- Additional aesthetical effects through Screen Printing or PU Casting, Transparent or Colored Resin directly to the Finished surface is possible.

4

## PAD PRINTING

- For printing on difficult surfaces such as rigid and concave or convex surfaces.
- Has application in:
  - Automotive Components
  - Bottles and other Containers (perfumes, cosmetics etc.)
  - Medical devices (syringes, surgical instruments, etc.)

5

## HOT STAMPING

- On Plastics and Glass.
- Adds dash and a look of exclusiveness.



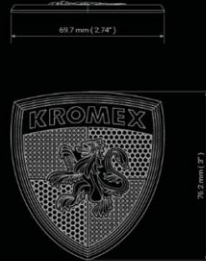


## SILK SCREEN PRINTING



## **KROMEX AND DOMING**

CHEVROLET



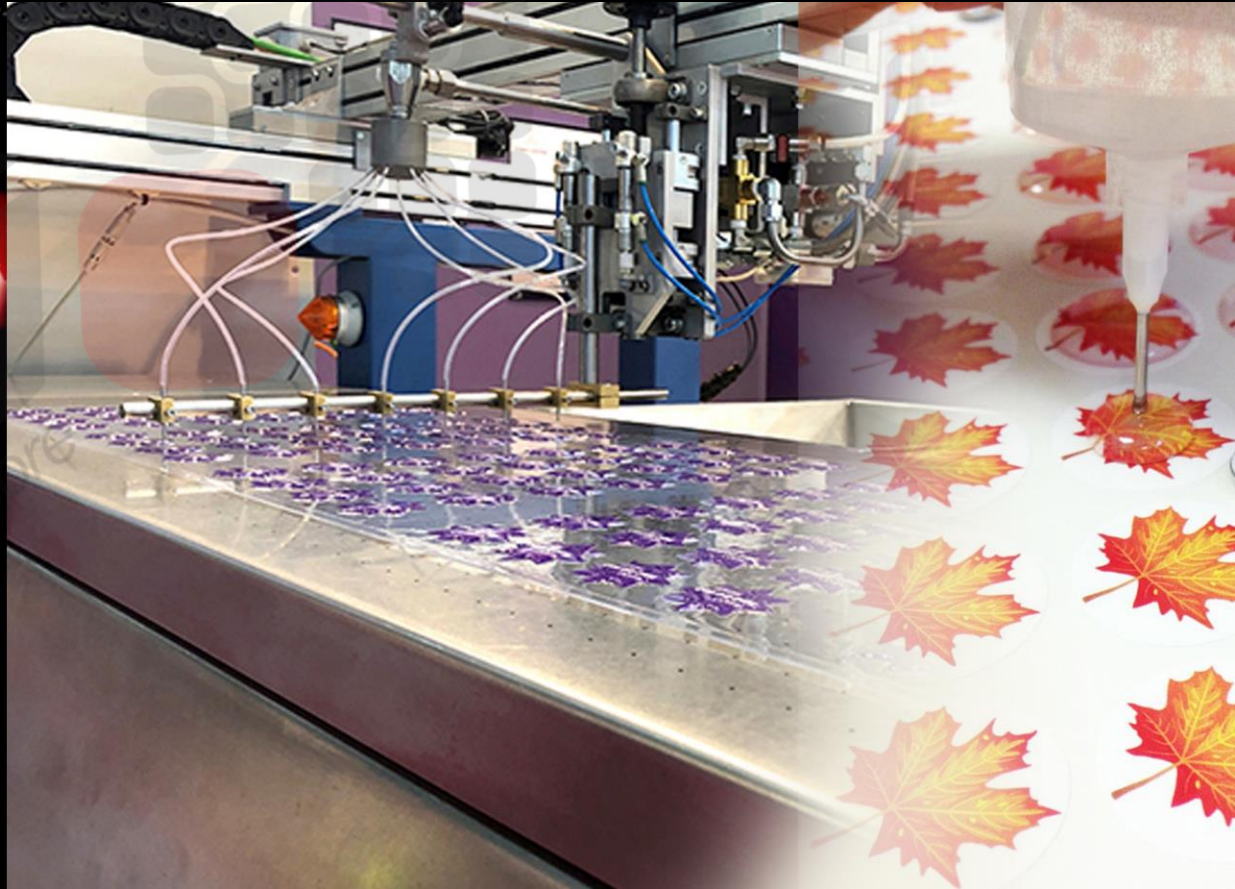
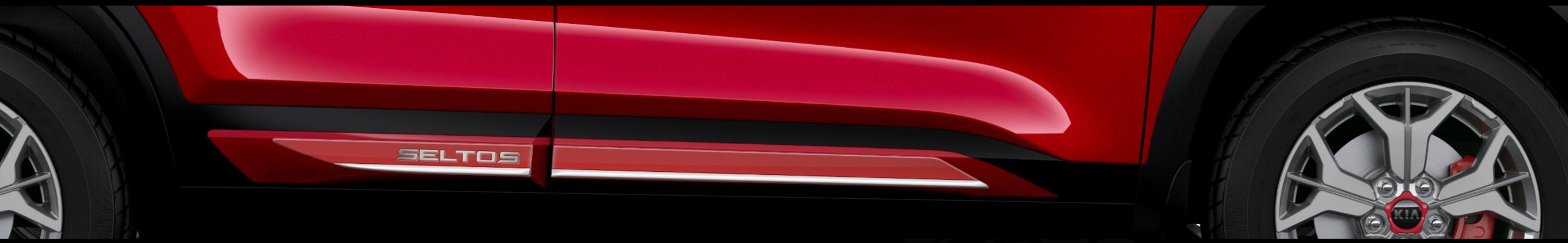
CHROME EFFECT



SAFARI ALTRON



KROMEX



## PU DOME LABELS

# ELECTRONICS AND ELECTRICALS

- SURFACE MOUNTING TECHNOLOGY
- WIRING HARNESS ASSEMBLY
- ELECTRICAL ASSEMBLY



## SURFACE MOUNTING TECHNOLOGY

- Surface Mountable chips and components are picked and dropped on the PCB as programmed.
- A fully automated process.
- Soldering done using reflow process.
- Applied in manufacturing of Car Door Sill Guard, Ambient Light, Car Side Mirror and Led DRL.
- Applied in manufacturing of Wireless Chargers.

## WIRING HARNESS ASSEMBLY

- Semi-automated assembly lines.
- Involves cutting, peeling, crimping and tying.
- Application in Automobile Industry, Home Appliance Industry and IT Hardware Industry.

## ELECTRICAL ASSEMBLY ASSEMBLY

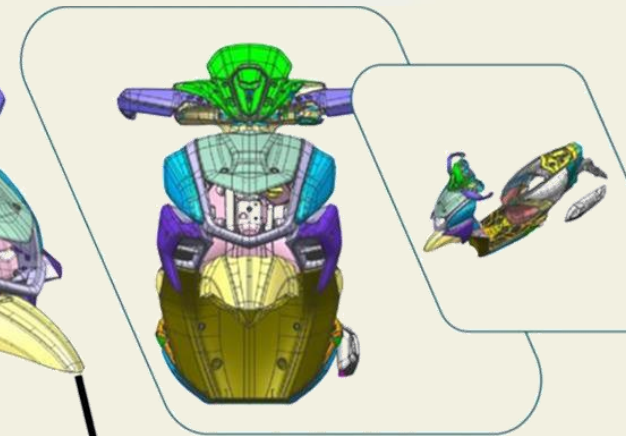
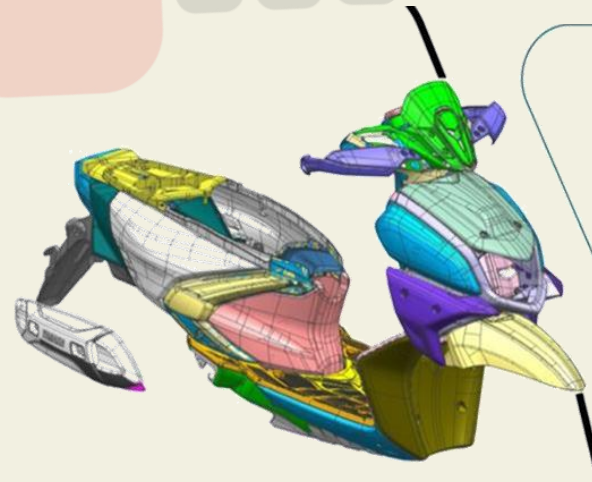
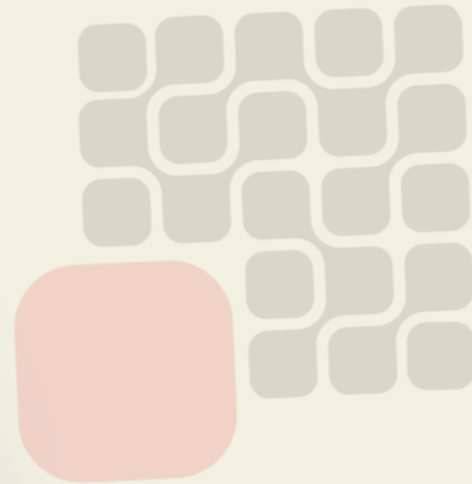
- Semi-automated assembly lines.
- Involves assembly of Housing, PCBs, Wiring Harnesses and other components to assemble a complete product.
- Application in Automobile Industry, Home Appliance Industry and IT Hardware Industry.



## **ELECTRONICS AND ELECTRICALS**



**EV**



EV



# CAR AND HOME CARE

## CAR PERFUME

- Completely produced in-house.
- Two Product Patents.

## CAR CARE

- Liquid Wax
- Tyre Dresser
- Dashboard Dresser
- Microfiber Detailing Cloth



## CAR PERFUME

2 Product Patents

- Unique technology and formulation eliminates existing odor and replaces it with a refreshing fragrance.
- Fragrances carefully curated to appeal both men and women.
- Four standard fragrances and more can be produced on demand.

7 Types | Gel: Water & Oil Based | Liquid | Membrane  
| Perfumed Injected Plastic Moulded articles  
| Aerosol sprays | Organic



## DASHBOARD DRESSER

- Leaves no greasy residue.
- Protects surface from UV rays and prevents fading.

## TYRE DRESSER

- Restore color and shine.
- Improves overall look of Car.



## LIQUID WAX

- Suitable for both manual and machine application.
- Restores original shine.

## CAR SHAMPOO

- Removes tough dirt and road grime.
- Effective with hard or soft water.



## MICROFIBER DETAILING CLOTH

- Removes oily or filmy residues like wax, glazes, polishes and fingerprints without scratching.
- Leaves no lint behind.

## INDUSTRIAL POURING

- Detergents, Polishes, etc.



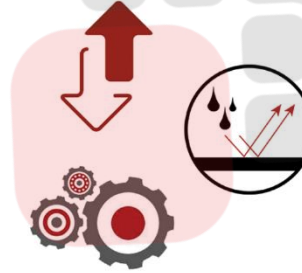


## CAR AND HOME CARE



## DOUBLE SIDE TAPE

- ACRYLIC TAPE
- TISSUE TAPE
- DIE CUT TAPE



1

- A key product in JSG's portfolio of offerings.
- Multi-use and wide application.

2

- High production capacity.
- Automated Slitting.
- Automated Roll-to-Roll Die Cutting.

3

- CHANNEL PARTNERSHIPS**
- 3M • Nitto • Lohmann

4

- OUR OWN BRAND**
- Galio Branded Tapes Available.